



OptiTower

MAXIMIZE WORKSPACE **EFFICIENCY.**

SAVE TIME **DAILY.**

PREVENT COSTLY **DOWNTIME.**

ENHANCE OPERATOR **SAFETY.**

STREAMLINE EVERY **WORKFLOW.**

Built for durability and efficiency, the OptiTower integrates power outlets, USB charging, compressed air, data access, and multi-level storage, all in one compact vertical solution.

Ideal for assembly lines, warehouses, auto repair shops, engineering workshops, manufacturing facilities, parking decks and eMobility stations, laboratories, and even fire or police stations, anywhere organization, accessibility, and space-saving design are critical.

By centralizing tools, screens, and power within reach, the OptiTower saves 25 minutes per operator per day, or **\$4,011 annually**. Across a 10-person team, that's over **\$40,000 in yearly productivity gains**. Integrated power and data systems further reduce downtime by 6 hours per operator per year, saving another **\$231 per person** and **\$2,310 per team**.

Its ergonomic design minimizes repetitive strain injuries, avoiding roughly five claims per year and **\$1,500 in costs** across ten workstations (downtime and lost output compensation not included). The compact footprint also saves approximately 12-18 square feet per station, **freeing up \$3,000** in production space annually for a ten-unit setup.

The OptiTower redefines what a workstation can be, compact, efficient, and built to last. It brings power, organization, and safety together in one vertical hub that transforms cluttered floors into streamlined, high-performance environments. Wherever teams work hard, the OptiTower works harder to keep them moving.

KEY BENEFITS



ALL-IN-ONE UTILITY TOWER

Compact vertical workstation that combines power, air, display, and tool integration in one customizable unit.



BOOSTS PRODUCTIVITY

Reduces worker motion, speeds up task transitions, and keeps everything in reach — ideal for lean manufacturing and 5S environments.



MODULAR & SCALABLE

Modular components (monitor, power tools, keyboard trays, etc.) can be easily added or repositioned to fit any specific workflow.



SPACE-EFFICIENT DESIGN

Takes up minimal floor space while serving as the operational core of a workstation. Fixed installed or as mobile unit.



BUILT FOR INDUSTRY

Industrial-grade materials and compatibility with standard tools, power systems, and VESA mounts.

OptiTower.com



IMAGE SHOWN FEATURES A FULLY LOADED OPTITOWER FOR DISPLAY PURPOSES ONLY. ACCESSORIES AND EQUIPMENT NOT INCLUDED.

OptiTower

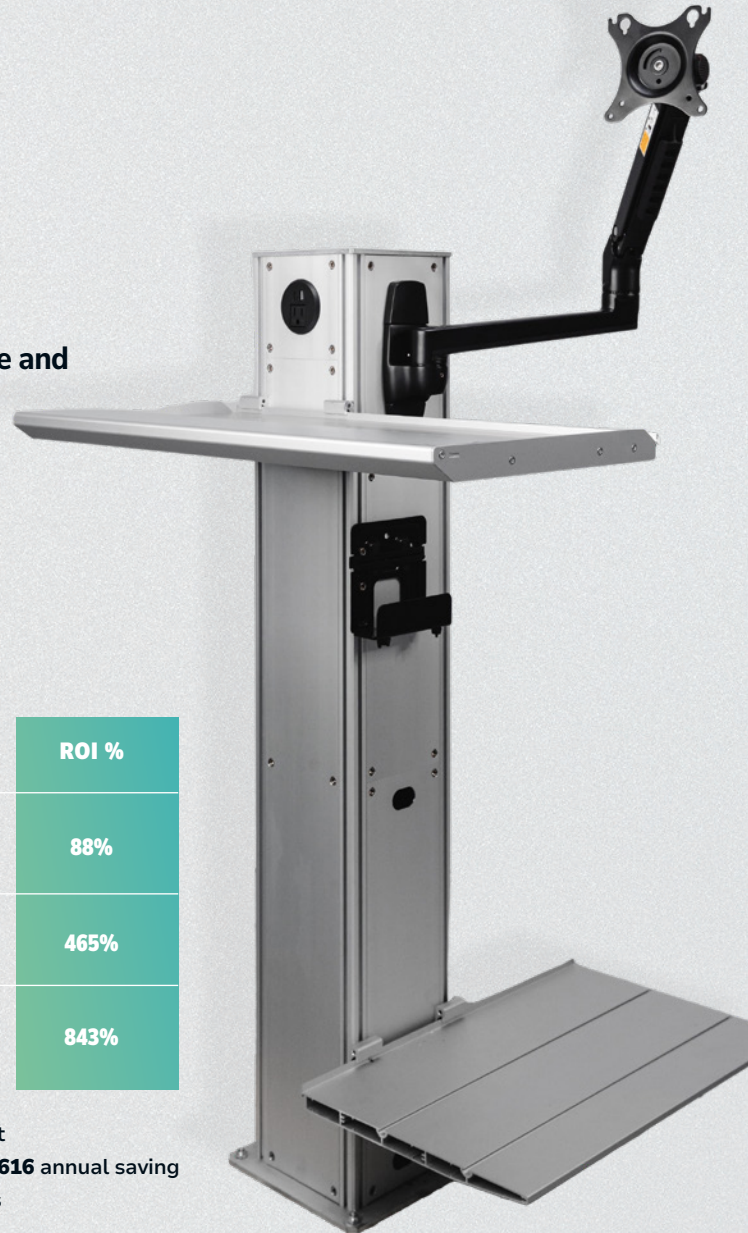
CORE TOWER

Our most streamlined tower that saves time and reduces clutter with minimal footprint.

\$2,450 MSRP

TIME PERIOD	TOTAL SAVINGS	NET PROFIT (PER TOWER)	ROI %
1 YEAR	→ \$4,616 →	\$2,166 →	88%
3 YEARS	→ \$13,848 →	\$11,398 →	465%
5 YEARS	→ \$23,080 →	\$20,630 →	843%

One Core Tower will save an average of 30 minutes/day, at \$35/hr → **\$17.50** saved daily. 250 workdays x \$17.50 = **\$4,616** annual saving per Core Tower. Tower cost: **\$2,450** → **ROI in 13.6 months**





➤ Visit [optitower.com/charging](https://www.optitower.com/charging) for full details and a 360° view of the Core Tower.

IMAGE SHOWN FEATURES A FULLY LOADED OPTITOWER FOR DISPLAY PURPOSES ONLY. ACCESSORIES AND EQUIPMENT NOT INCLUDED.

Core Tower SPECS

MODULE	SPECIFICATION
POWER SUPPLY INLET	125V Power Supply Inlet
RJ45 MODULE	RJ45 Shielded Panel Mount Connector, D-Type, RJ45 CAT6A Socket (Female)
POWER SUPPLY (BACKUP SYSTEM OPTIONAL)	UPS Battery Backup & Surge Protector — 400VA/255W, 6 Outlets, Standby Type, Compact Design, Black
SCREEN HOLDER MODULE	Mount for flat or curved screens up to 38" (25 lbs max), full-motion arm with cable management, VESA 75×75 / 100×100 mm, black
KEYBOARD TRAY MODULE + TRAY	Rigid keyboard tray or keyboard tray on full-motion arm with cable management, VESA 75×75 / 100×100 mm, black
PRINTER TRAY MODULE	Shelf for label/document printer
POWER OUTLET + USB	Integrated Power Outlet with USB charging
OPTIONAL ACCESSORIES	Compatible with laptop/industrial PC mounts, barcode/label scanner holders, and modular trays





IMAGE SHOWN FEATURES A FULLY LOADED OPTITOWER FOR DISPLAY PURPOSES ONLY. ACCESSORIES AND EQUIPMENT NOT INCLUDED.

OptiTower

WAREHOUSE TOWER

A streamlined warehouse tower that saves time, reduces clutter, and improves safety at the dock

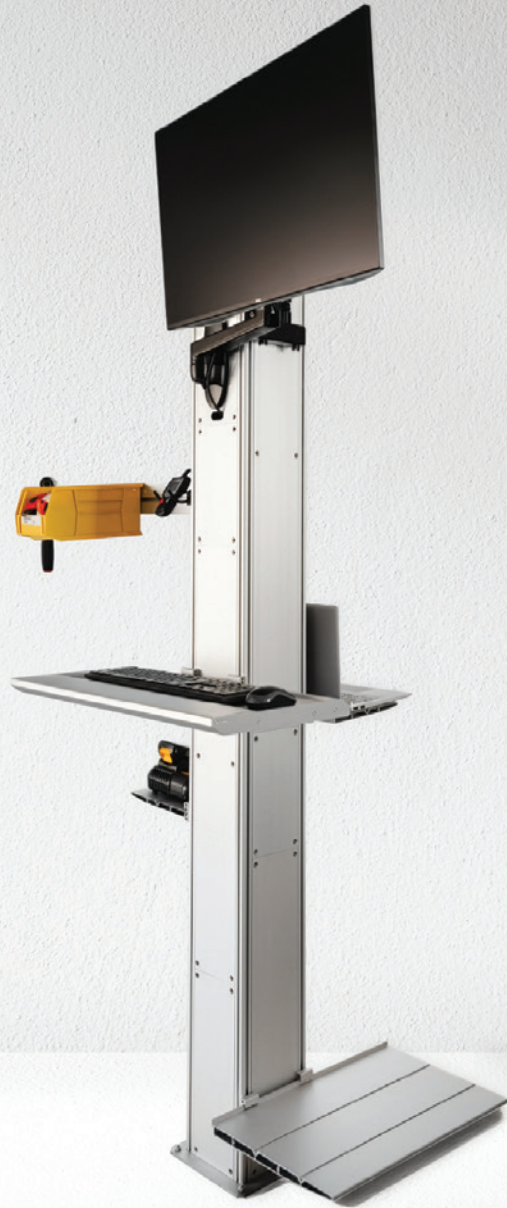
\$4,950 MSRP

TIME PERIOD	TOTAL SAVINGS	NET PROFIT (SAVINGS - COST)	ROI %
1 YEAR	→ \$4,692 →	→ -\$258 →	-5%
3 YEARS	→ \$14,076 →	→ \$9,126 →	184%
5 YEARS	→ \$23,460 →	→ \$18,510 →	374%

Warehouse Tower Savings per year: **\$4,692**

1 Unit Cost **\$4,950** | Break even after only **12.75 months**





► Visit [optitower.com/warehouse](https://www.optitower.com/warehouse) for full details and a 360° view of the Warehouse Tower.

IMAGE SHOWN FEATURES A FULLY LOADED OPTITOWER FOR DISPLAY PURPOSES ONLY. ACCESSORIES AND EQUIPMENT NOT INCLUDED.

Warehouse Tower SPECS

MODULE	SPECIFICATION
125V / 250V POWER INLET	Power Inlet NEMA L14-30P, 125/250 Volt
AIR INLET	Quick Connect Hose Coupling – Industrial Steel, Plug, Male, 3/8" Coupling Size
RJ45 MODULE	RJ45 Shielded Panel Mount Connector, D-Type, RJ45 CAT6A Socket (Female)
CIRCUIT BREAKER MODULE	IMO Miniature Circuit Breaker UL489 UB10C1015A
POWER SUPPLY BRACKET (BACKUP SYSTEM OPTIONAL)	UPS Battery Backup & Surge Protector – 400VA/255W, 6 Outlets, Standby Type, Compact Design, Black
SCREEN HOLDER MODULE	Mount for flat or curved screens up to 38" (25 lbs max), full-motion arm with cable management, VESA 75x75 / 100x100 mm, black
KEYBOARD TRAY MODULE + TRAY	Rigid keyboard tray or keyboard tray on full-motion arm with cable management, VESA 75x75 / 100x100 mm, black
COMPUTER MODULE (EXTERNAL OR INTERNAL)	Mount Plus MP-06-02 Cable Box Mount – Adjustable wall mount for small and wide devices
AIR DISTRIBUTION	Quick Connect Hose Coupling – Industrial Steel, Socket, Male, 3/8" Coupling Size
POWER OUTLET + USB	Power Outlet with integrated 20W USB-C Fast Charging
POWER OUTLET X2	US Waterproof & Dustproof Power Outlet Type: 3-Hole Female Socket Rated: AC 15A / 125V
ADDITIONAL HOLDER AND TRAYS	Printer tray included; optional tool/container arm and accessory trays for \$500



OptiTower

ASSEMBLY LINE TOWER

A fully powered assembly
workstation that saves time
and increases safety

\$4,800* MSRP

TIME PERIOD	TOTAL SAVINGS	NET PROFIT (SAVINGS - COST)	ROI %
1 YEAR	→ \$4,692 →	→ -\$608 →	-11%
3 YEARS	→ \$14,076 →	→ \$8,776 →	166%
5 YEARS	→ \$23,460 →	→ \$18,160 →	343%

Assembly Tower Savings per year: **\$4,692**

1 Unit Cost **\$5,300** | Break even after only **13.6 months**
(Calculated with rack fully loaded)



* LOADED TOOL RACK SHOWN IS OPTIONAL



➤ Visit [optitower.com/assemblyline](https://www.optitower.com/assemblyline) for full details and a 360° view of the Assembly Line.

IMAGE SHOWN FEATURES A FULLY LOADED OPTITOWER FOR DISPLAY PURPOSES ONLY. ACCESSORIES AND EQUIPMENT NOT INCLUDED.

Assembly Line Tower SPECS

MODULE	SPECIFICATION
125V / 250V POWER INLET	Power Inlet NEMA L14-30P, 125/250 Volt
AIR INLET	Quick Connect Hose Coupling – Industrial Steel, Plug, Male, 3/8" Coupling Size
RJ45 MODULE	RJ45 Shielded Panel Mount Connector, D-Type, RJ45 CAT6A Socket (Female)
CIRCUIT BREAKER MODULE	IMO Miniature Circuit Breaker UL489 UB10C1015A
POWER SUPPLY BRACKET (BACKUP SYSTEM OPTIONAL)	UPS Battery Backup & Surge Protector – 400VA/255W, 6 Outlets, Standby Type, Compact Design, Black
SCREEN HOLDER MODULE	Mount for flat or curved screens up to 38" (25 lbs max), full-motion arm with cable management, VESA 75x75 / 100x100 mm, black
KEYBOARD TRAY MODULE + TRAY	Rigid keyboard tray or laptop/keyboard tray on a full-motion arm with cable management, VESA 75x75 / 100x100 mm, black
COMPUTER MODULE (EXTERNAL OR INTERNAL)	Mount Plus MP-06-02 Cable Box Mount – Adjustable wall mount for small and wide devices
AIR DISTRIBUTION	Quick Connect Hose Coupling – Industrial Steel, Socket, Male, 3/8" Coupling Size
POWER OUTLET + USB	Power Outlet with integrated 20W USB-C Fast Charging
POWER OUTLET X2	US Waterproof & Dustproof Power Outlet Type: 3-Hole Female Socket Rated: AC 15A / 125V
TOOL HOLDER ARM	Optional: Tool rack loaded with accessories as shown — \$500.



IMAGE SHOWN FEATURES A FULLY LOADED OPTITOWER FOR DISPLAY PURPOSES ONLY. ACCESSORIES AND EQUIPMENT NOT INCLUDED.

OptiTower

ENGINEERING TOWER

A mobile, fully powered
engineering & programming
workstation

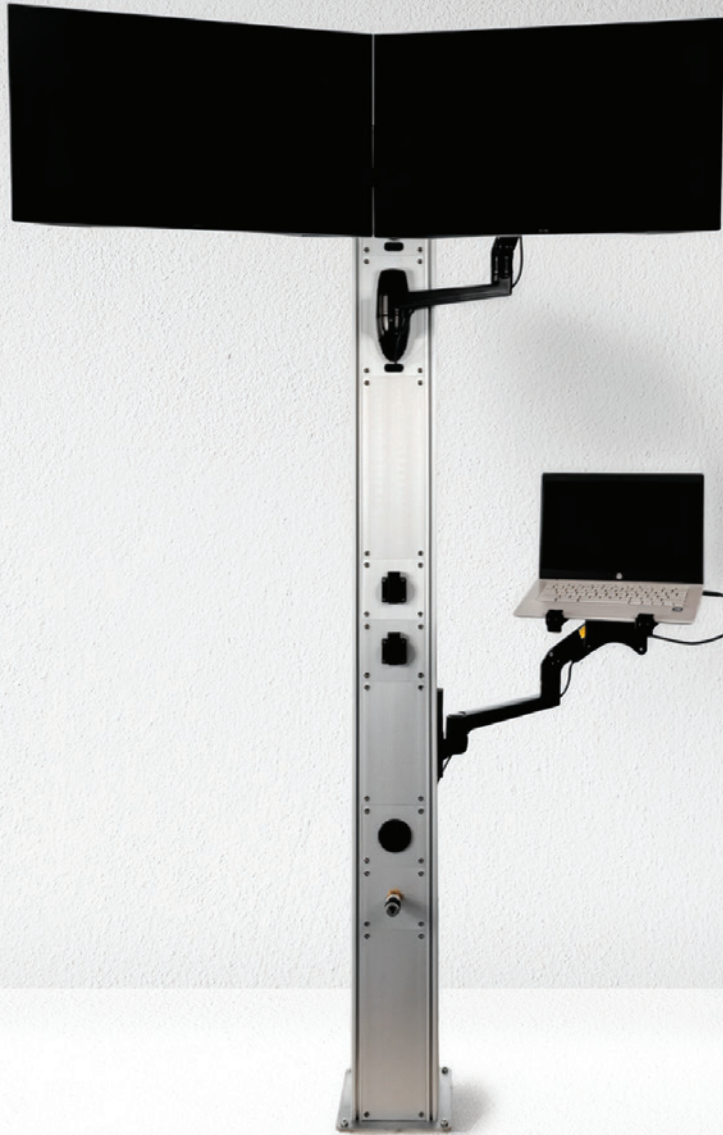
\$4,800 MSRP

TIME PERIOD	TOTAL SAVINGS	NET PROFIT (SAVINGS - COST)	ROI %
1 YEAR	→ \$4,692 →	→ -\$108 →	-2%
3 YEARS	→ \$14,076 →	→ \$9,276 →	193%
5 YEARS	→ \$23,460 →	→ \$18,660 →	389%

Engineering Tower Savings per year: **\$4,692**

1 Unit Cost **\$4,800** | Break even after only **12.3 months**





➤ Visit [optitower.com/engineering](https://www.optitower.com/engineering) for full details and a 360° view of the Engineering Tower.

IMAGE SHOWN FEATURES A FULLY LOADED OPTITOWER FOR DISPLAY PURPOSES ONLY. ACCESSORIES AND EQUIPMENT NOT INCLUDED.

Engineering Tower SPECS

MODULE	SPECIFICATION
125V / 250V POWER INLET	Power Inlet NEMA L14-30P, 125/250 Volt
AIR INLET	Quick Connect Hose Coupling – Industrial Steel, Plug, Male, 3/8" Coupling Size
RJ45 MODULE	RJ45 Shielded Panel Mount Connector, D-Type, RJ45 CAT6A Socket (Female)
CIRCUIT BREAKER MODULE	IMO Miniature Circuit Breaker UL489 UB10C1015A
POWER SUPPLY BRACKET (BACKUP SYSTEM OPTIONAL)	UPS Battery Backup & Surge Protector – 400VA/255W, 6 Outlets, Standby Type, Compact Design, Black
SCREEN HOLDER MODULE	Mount for flat or curved screens up to 38" (25 lbs max), full-motion arm with cable management, VESA 75x75 / 100x100 mm, black
KEYBOARD TRAY MODULE + TRAY	Laptop or keyboard tray on a full-motion arm with cable management , VESA 75x75 / 100x100 mm, black
COMPUTER MODULE (EXTERNAL OR INTERNAL)	Mount Plus MP-06-02 Cable Box Mount – Adjustable wall mount for small and wide devices
AIR DISTRIBUTION	Quick Connect Hose Coupling – Industrial Steel, Socket, Male, 3/8" Coupling Size
POWER OUTLET + USB	Power Outlet with integrated 20W USB-C Fast Charging
POWER OUTLET X2	US Waterproof & Dustproof Power Outlet Type: 3-Hole Female Socket Rated: AC 15A / 125V

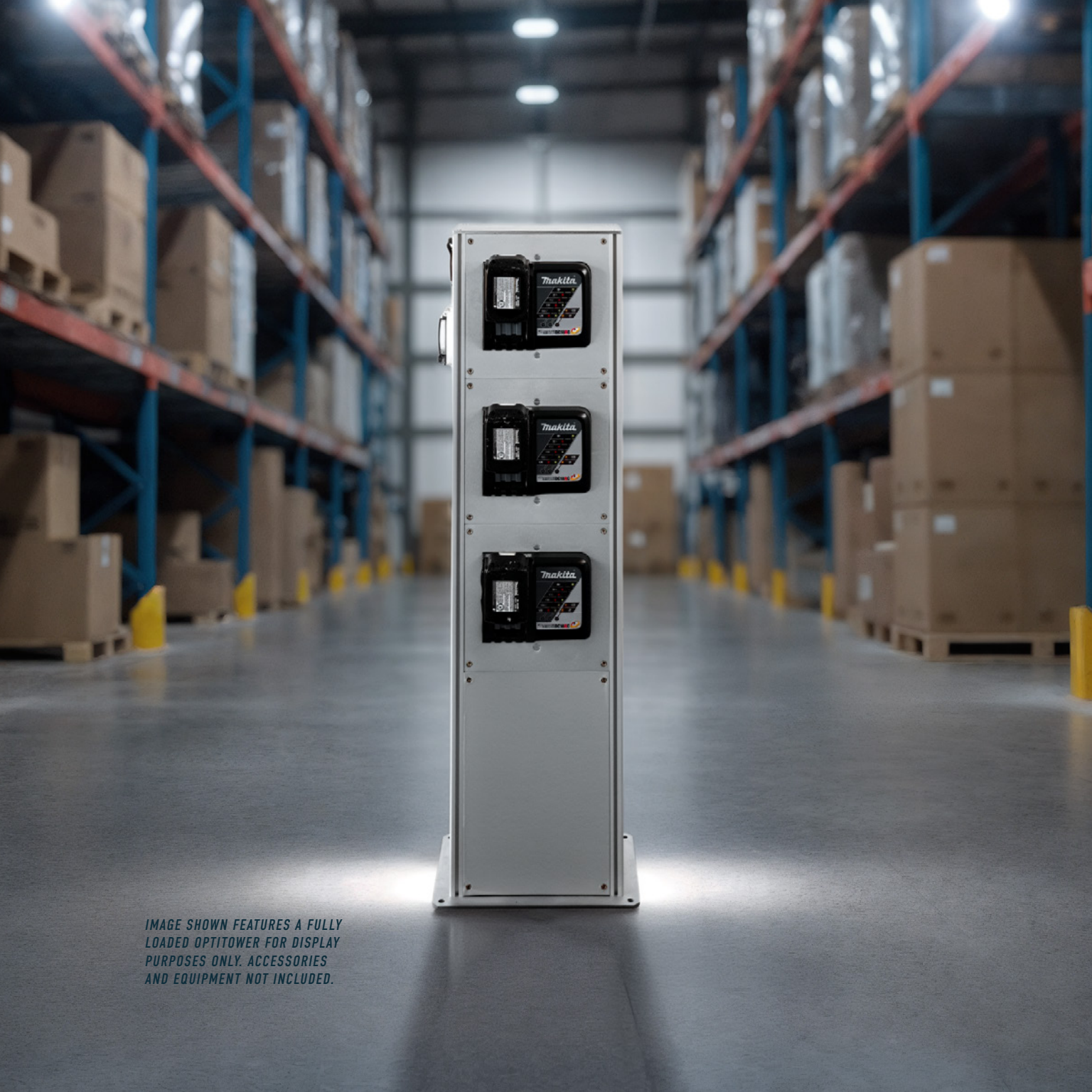


IMAGE SHOWN FEATURES A FULLY LOADED OPTITOWER FOR DISPLAY PURPOSES ONLY. ACCESSORIES AND EQUIPMENT NOT INCLUDED.

OptiTower

CHARGING TOWER

A centralized hub for Makita, DeWalt, and Milwaukee batteries — keeping tools powered, workstations organized, and operators safe while saving up to 25 minutes a day.

\$2,300 MSRP

TIME PERIOD	TOTAL SAVINGS	NET PROFIT (PER TOWER)	ROI %
1 YEAR	→ \$2,083	→ \$217	-9%
3 YEARS	→ \$6,249	→ \$3,949	172%
5 YEARS	→ \$10,415	→ \$8,115	353%

One Charging Tower will save an average of 20 minutes/day, at \$25/hr → **\$8.33** saved daily. 250 workdays x \$8.33 = **\$2,083** annual saving per Charging Tower. Tower cost: **\$2300** → **ROI in 13.3 months**





➤ Visit [optitower.com/charging](https://www.optitower.com/charging) for full details and a 360° view of the Charging Tower.

IMAGE SHOWN FEATURES A FULLY LOADED OPTITOWER FOR DISPLAY PURPOSES ONLY. ACCESSORIES AND EQUIPMENT NOT INCLUDED.

Charging Tower SPECS

MODULE	SPECIFICATION
125V / 250V POWER INLET	Power Inlet NEMA L14-30P, 125/250 Volt
CIRCUIT BREAKER MODULE	IMO Miniature Circuit Breaker UL489 UB10C1015A
CHARGING MODULES	6 Charging Station Mounts (Chargers not supplied) – compatible with Makita, DeWalt, and Milwaukee chargers





IMAGE SHOWN FEATURES A FULLY LOADED OPTITOWER FOR DISPLAY PURPOSES ONLY. ACCESSORIES AND EQUIPMENT NOT INCLUDED.

OptiTower

PROGRAMMING TOWER

A mobile, multi-brand hub that protects laptops, organizes diagnostics, and keeps tools ready — saving time, reducing clutter, and preventing downtime.

\$2,950 MSRP

TIME PERIOD	TOTAL SAVINGS	NET PROFIT (PER TOWER)	ROI %
1 YEAR	→ \$4,375 →	\$1,425 →	48%
3 YEARS	→ \$13,125 →	\$10,175 →	345%
5 YEARS	→ \$21,875 →	\$18,925 →	642%

One Programming Tower will save an average of 30 minutes/day, at \$35/hr → **\$17.50** saved daily. 250 workdays x \$17.50 = **\$4,375** annual saving per Charging Tower. Tower cost: **\$2,950** → **ROI in 8.1 months**





› Visit [optitower.com/programming](https://www.optitower.com/programming) for full details and a 360° view of the Programming Tower.

IMAGE SHOWN FEATURES A FULLY LOADED OPTITOWER FOR DISPLAY PURPOSES ONLY. ACCESSORIES AND EQUIPMENT NOT INCLUDED.

Programming Tower SPECS

MODULES	SPECIFICATION
POWER SUPPLY REEL	125V Power Supply Reel
LAPTOP POWER SUPPLY	4-Laptop Power Supply Unit
POWER OUTLET + USB	Integrated Power + USB Ports
SCREEN HOLDER MODULE	4-Side Laptop Holder System
DIAGNOSTIC HOLDER MODULE	Diagnostic Tablet Holder System
DIAGNOSTIC TOOL HOLDER	2 Diagnostic Tool Holders
MOBILE STAND	Heavy-Duty Mobile Caster Base

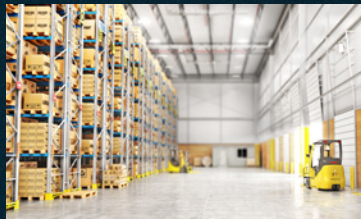


WHAT IS YOUR CASE?

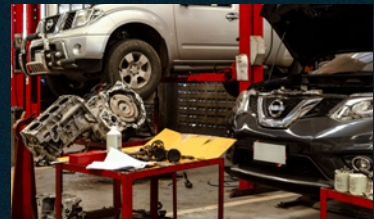
Engineered for maximum versatility, the **OptiTower** performs reliably in any environment.



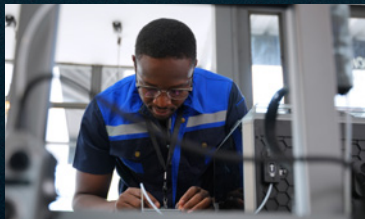
ASSEMBLY LINES



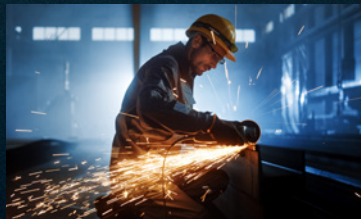
WAREHOUSES



AUTO REPAIR SHOPS



ENGINEERING WORKSHOP



MANUFACTURING FACILITIES



PARKING DECKS / EMOBILITY



LABORATORIES



FIRE / POLICE STATIONS



RV / CAMPGROUNDS

LOOKING FOR A FULLY CUSTOM OptiTower?

Let our engineers know about
your use case and we can discuss
options: custom@optitower.com





SALES@OPTITOWER.COM | 470-228-2174

2133 LAWRENCEVILLE-SUWANEE RD

SUITE 12-389 SUWANEE, GA 30024

OptiTower.com